



## Through connection block type BPP2- 2S3/1

for rated voltage 500V



Through connection block type BPP2-2S3/1 is a device designed for use in underground mining pits in non-explosive coal dust conditions and on the ground.

Through connection block type BPP2-2S3/1 is designed for connecting and distributing power in mine distribution three-phase grid with isolated star point transformer (IT system) for rated grid voltage of 500V.

Wires are connected to the switchgear BPP2-2S3/1 via clamps or via clamps to connecting cable without terminals through cable glands.

### TECHNICAL DATA:

Ingress protection	IP54
Insulation rated voltage of main circuits	660 V
Rated power supply voltage	3x500V,50Hz,IT grid
Rated outlet 1÷2 current	(315,32) A
Number of outlets	2
Dimensions	1330 x 550 x 350mm (H x W x D)
Weight	70kg

## CONSTRUCTION

The through connection block is composed of a housing mounted on a frame construction, equipped with brackets. The frame construction allows the device to be hung on the pit wall.

## MODE OF OPERATION

In 3x500V main grid the through connection block is equipped with a three-position switch Q (main power supply/power supply off/reserve power supply). Every position of the switch can be locked by putting a lock on the switches drive lever.

Turning the 500V outlets on is being carried out by switching the lever into the main or reserve power supply position.

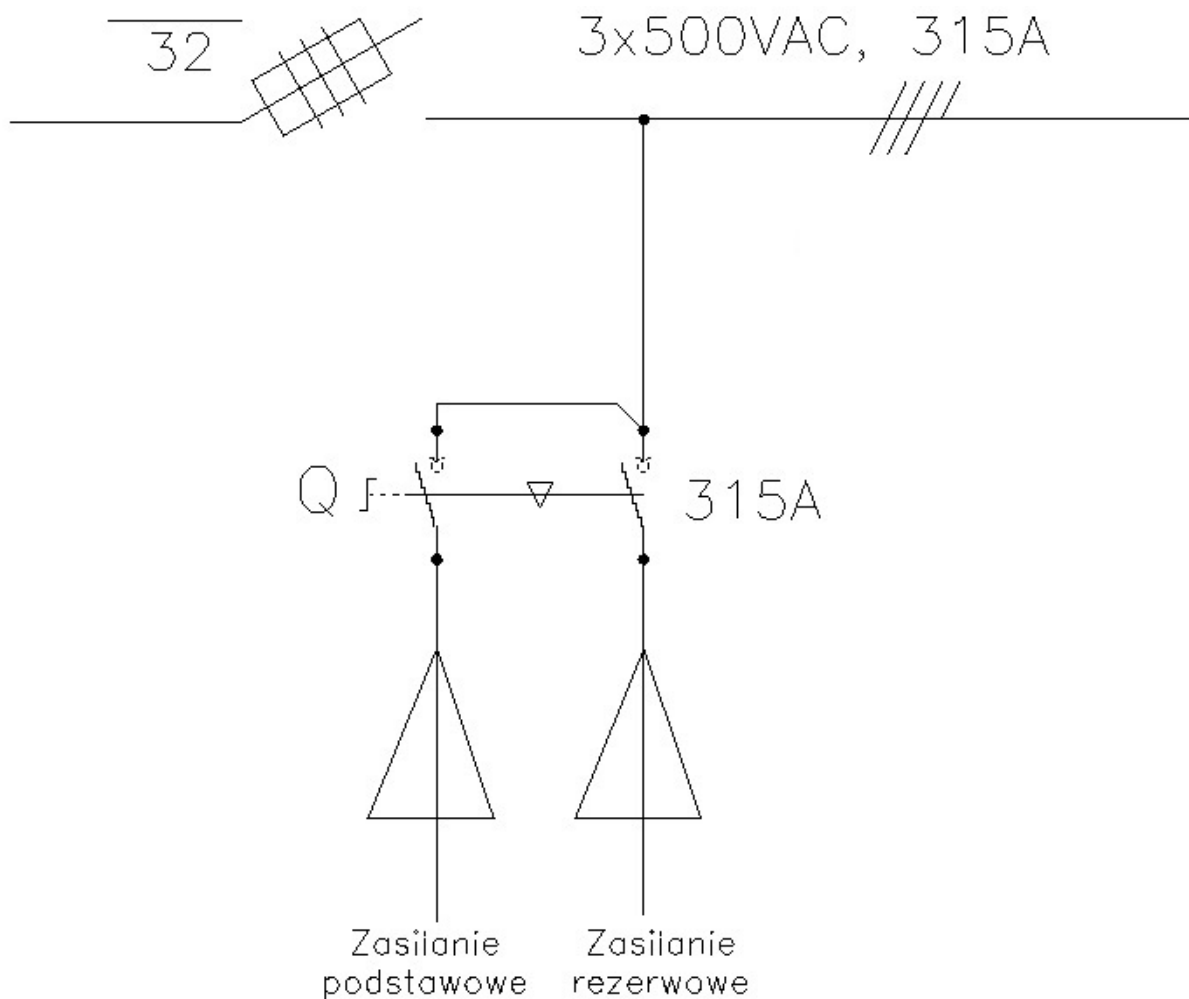
Blocks type BPP2-2S3/1 may be used in systems that require a main power supply and a reserve one.

## SCHEMATIC DIAGRAM

### Legend:

Zasilanie Podstawowe – **Main Power Supply**

Zasilanie Rezerwowe – **Reserve Power Supply**



Orders should be submitted in writing or by fax to the address: